

## GoldBand™ 100 bp DNA Marker

### Product description

The GoldBand™ 100 bp DNA Marker consists of twelve double-stranded DNA fragments (100, 200, 300, 400, 500, 600, 700, 800, 900, 1,000, 1,200, 1,500 bp). Since this product is premixed with 1× loading dyes, it can be used in agarose gel electrophoresis directly. The concentration of 500 bp fragment is 125 ng/5 μL, and the concentration of other fragments is 50 ng/5 μL. This product is suitable for the analysis of DNA fragments in agarose gel electrophoresis and is not recommended for polyacrylamide gel electrophoresis.

### Components

Components No.	Name	10507ES60 (100 T)	10507ES80 (10×100 T)
10507-A	GoldBand™ 100 bp DNA Marker	500 μL	500 μL×10
10507-B	5×DNA Loading buffer	1 mL	1 mL×10

### Specifications

Gel type	Agarose
Product type specs	A mixture of DNA molecular weight standards
Size range	100 bp-1,500 bp
Gel compatibility	Agarose gel

### Storage

The products should be stored at 2~8°C for six months; 25~-15°C for 1 year. Avoid repeated freeze-thawing.

### Instructions

1. The loading volume of marker is 5 μL. If gel wells are wider than the conventional, the loading volume needs to be increased appropriately.
2. It is recommended to use 1.0-2.0% Agarose, voltage 4-10 V/cm, 1×TAE (preferred) or 0.5×TBE buffer for electrophoresis.
3. Stain with nucleic acid dye such as EB or YeaRed, and observe the electrophoretic results under UV light.

## Electrophoretic diagram

100bp DNA ladder

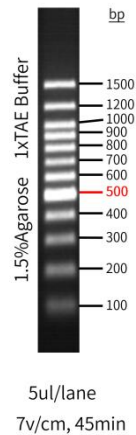


Figure 1. The electrophoretogram of GoldBand™ 100 bp DNA Marker

### Notes

1. When using, the product should be fully mixed, timely change the electrophoresis buffer and use the newly prepared gel to achieve the ideal electrophoresis result.
2. The attached 5×DNA Loading buffer can be used for sample detection.
3. If the product is used in electrophoresis, the strip is not clear or bending is not ideal, it is recommended to try diluting the sample with water. If the conventional width of the glue hole can be diluted 5 times with water, take 8-10  $\mu$ L for sample.
4. When dyeing with YeaGreen dye, if the buffer in the electrophoresis tank is run through the electrophoresis with YeaRed dye gel before the YeaGreen dye is used, the electrophoresis tank should be thoroughly cleaned and a new electrophoresis buffer should be added. It is recommended to observe electrophoretic bands under blue light.
5. For your safety and health, please wear lab coats and disposable gloves for operation.
6. This product is for research use ONLY!